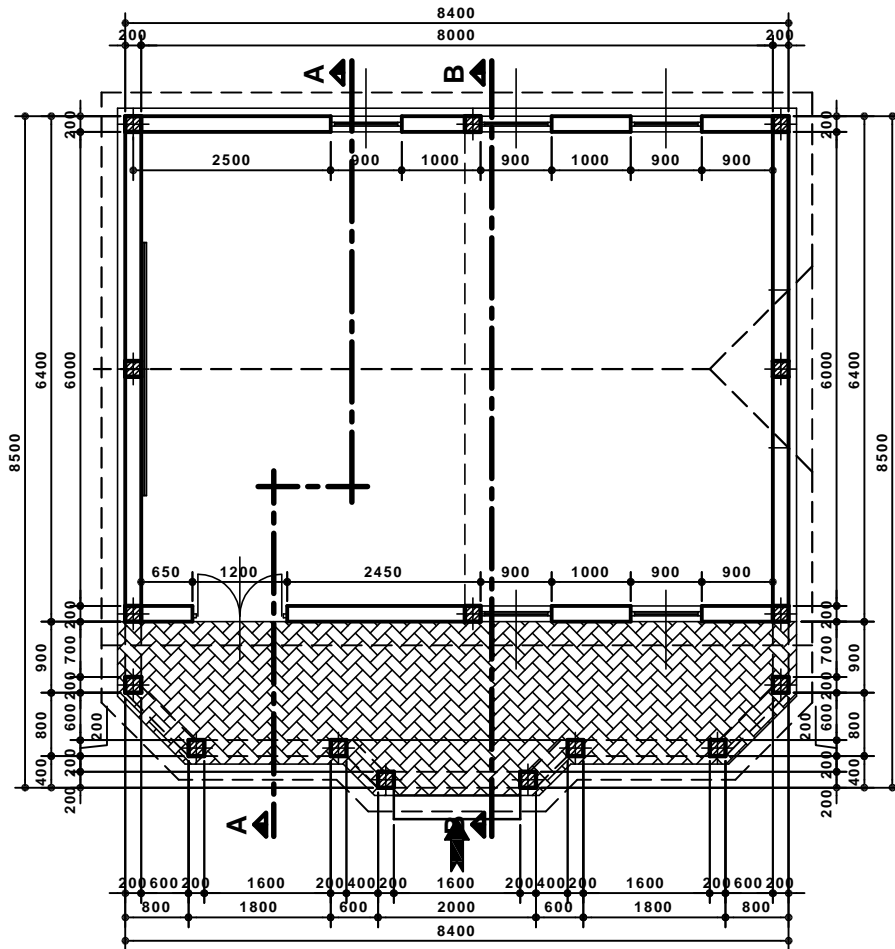
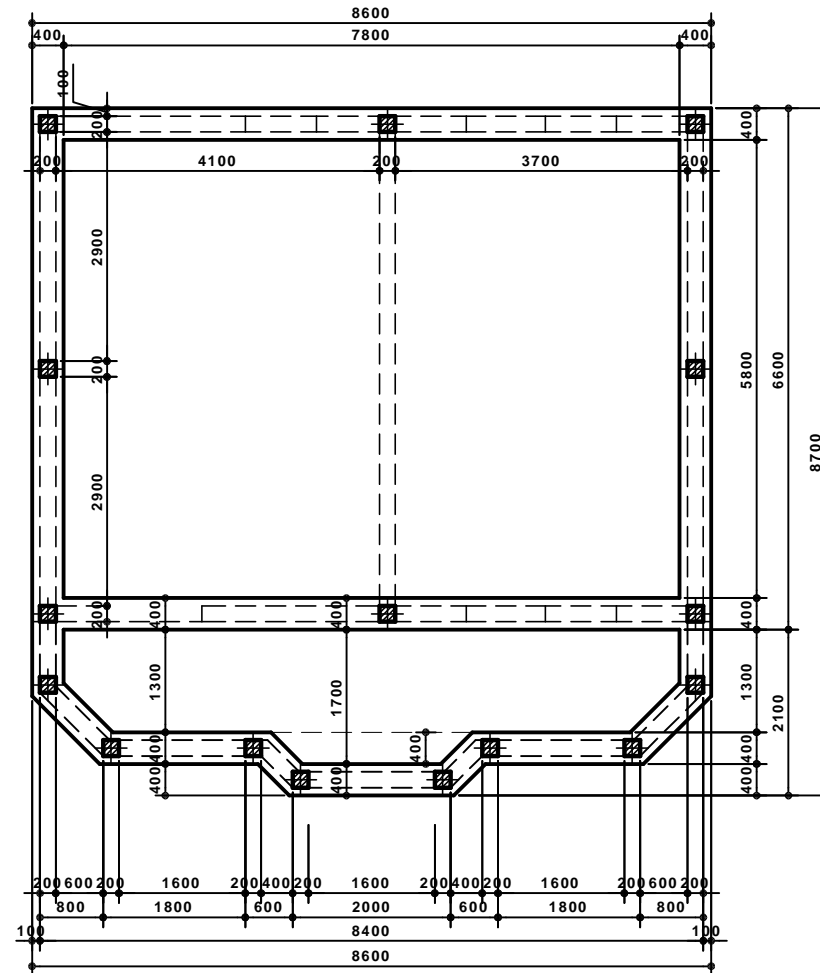


DAWACO P.S.: NEW SINGLE CRM SCHOOL BLOCK



DISTRIBUTION PLAN: 1: 100



FOUNDATION PLAN: 1: 100



1	PROJECT	DESIGN OF A SINGLE CRM SCHOOL BLOCK
2	LOCATION	DAWACO VILLAGE / SANAG / PUNTLAND
3	FUNDED BY	SCI / GAROWE OFFICE / PUNTLAND SOMALIA
4	OWNER	DAWACO PRIMARY SCHOOL / DAWACO VILLAGE
5	DRAWING	DISTRIBUTION LAYOUT PLAN / 1:100
6	DESIGNED BY	ENGINEER A/AZIZ OSMAN KITEH
7	DRAWN BY	IDEM / TEL. 0907740100
8	DATE	JUNE 14 / 2020

NEW SINGLE CRM SCHOOL BLOCK

DAWACO PRIMARY SCHOOL

DAWACO VILLAGE / SANAG / PUNTLAND

N.B.: ALL MEASUREMENTS ARE IN MM.